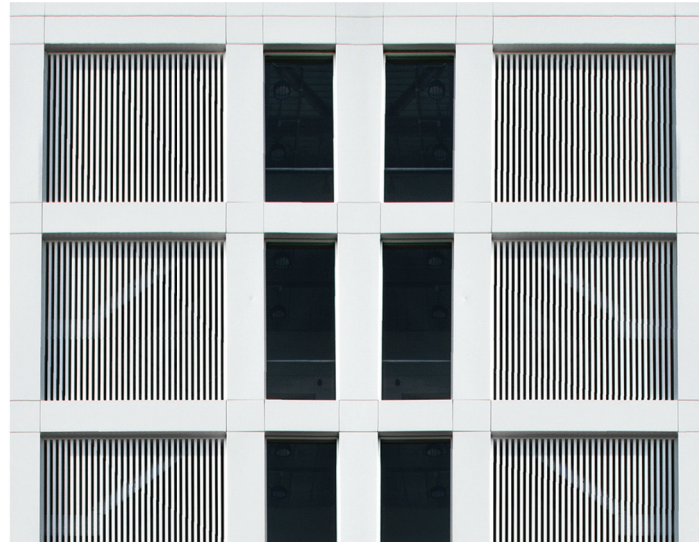


# Tracer® SC+ Building Automation System

Integrated Controls Solution for Trane®/Mitsubishi Electric VRF



## VRF Now Integrated With Tracer® SC+ Controls

The Power of Your Building in the Palm of Your Hand

Trane®/ Mitsubishi Electric VRF Systems are now compatible with Tracer® SC+ controls to manage an entire system or building. Tracer® SC+ allows you to streamline facility management and provides a flexible solution for superior building automation control.

### Benefits of Tracer® SC+ for Trane® / Mitsubishi Electric VRF

#### Flexibility

- Seamlessly integrate existing Trane Systems with Trane® / Mitsubishi Electric VRF
- Complete controls portfolio with support for open, standard protocols
- Monitor and manage multiple buildings and tenants from virtually anywhere, giving you greater freedom and peace of mind
- Simplified best-in-class design is flexible and scalable for complex larger buildings

#### Efficiency

- Effective VRF systems and visibility into controls increases energy efficiency
- Simplified, intuitive online user interface means quicker setup
- Gives occupants direct, limited control over scheduling and comfort
- Standardized installs with no need to customize for different sites

#### Expertise

- Tracer® SC+ has been successfully installed on more than 50,000 projects
- Complete system solution for your building
- Locally available experts provide best-in-class service including industry-leading training seminars

# Complete Variable Refrigerant Flow (VRF) Systems Solutions

Trane has paired applications knowledge and expertise with its extensive equipment to provide complete VRF systems solutions now with Tracer® SC+.

## Better VRF Systems Are on the Horizon

The best-in-class Tracer® SC+ controls platform now integrates with Trane® / Mitsubishi Electric VRF and Trane's Horizon® Dedicated Outdoor Air Systems (DOAS), providing ultimate flexibility, efficiency and expertise for any building design.



### Tracer® SC+

- Faster, less labor intensive out-of-the-box integration
- Secure remote access with less risk for the end user
- Combined interface for multiple buildings and system types
- Tracer® SC+ includes support for equipment from all generations. Built on a foundation of open, industry-standard protocols, Tracer® SC+ provides robust support for Trane and non-Trane equipment.

### N-Generation CITY MULTI® Series

- VRF system for operational and design flexibility
- Two-pipe system uses less space, with faster installation than competing three-pipe systems
- Next-gen heat exchanger, compressor and fan design deliver superior efficiency

### Horizon® DOAS

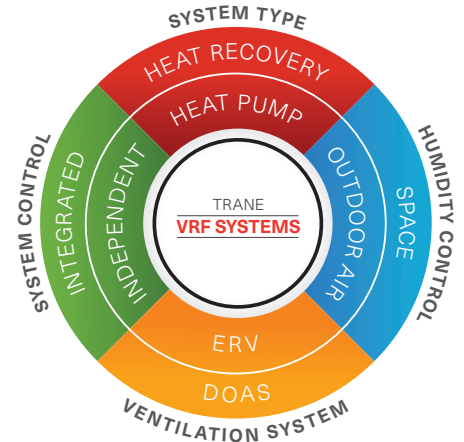
- Improved indoor air quality by properly conditioning and filtering the outdoor air required to ventilate a building
- Lower overall HVAC energy use
- Optimized for efficient humidity control, which improves occupant comfort

## VRF System Design Does Not Have to Be Complicated

By evaluating these four design considerations, you can help ensure a successful VRF system design for any commercial building project.

### Expanded Capabilities Beyond VRF

From Trane's industry-leading building automation systems to equipment controls and sensors, Trane offers a complete controls portfolio to enable you to operate buildings at peak energy and operational efficiency. With local, dedicated VRF and controls experts to help integrate with your existing equipment, Trane gives you the latitude to easily expand into other systems within your building, multiple buildings and buildings you'll add in the future.



To learn more, contact your local office or visit [www.Trane.com/VRF](http://www.Trane.com/VRF).



Trane – by Trane Technologies (NYSE: TT), a global climate innovator – creates comfortable, energy efficient indoor environments through a broad portfolio of heating, ventilating and air conditioning systems and controls, services, parts and supply. For more information, please visit [trane.com](http://trane.com) or [tranetechnologies.com](http://tranetechnologies.com).

All trademarks referenced in this document are the trademarks of their respective owners.

BAS-SLB119-EN  
© 2020 Trane. All Rights Reserved.  
June 25, 2020