

Trane® Axiom™ Water Source Heat Pumps



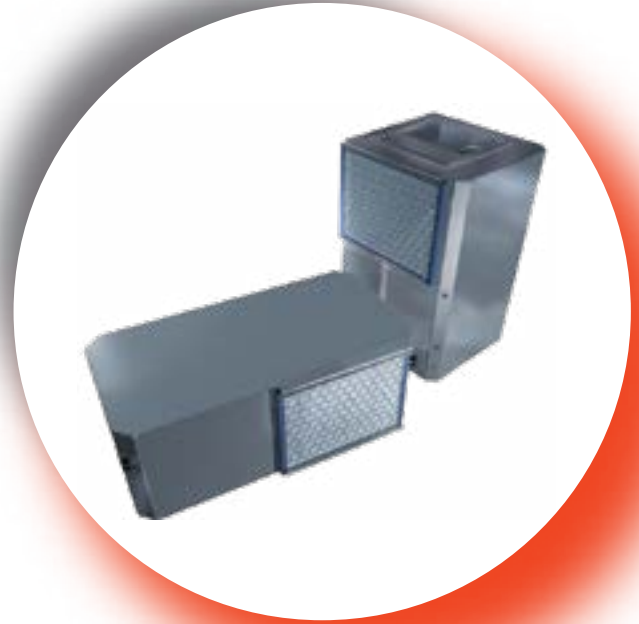
Imagine a full range of comfort utilizing efficiency, sound attenuation, integrated controls, and superior maintenance accessibility

Models GEH and GEV – 0.5 to 5 tons

Model GEH and GEV products provide sleek, innovative shape, along with convertibility of the supply-air arrangement; serviceability to maintenance components; indoor air quality standards; sound attenuation; and best of all, higher efficiencies with certified AHRI-ISO 13226-1 performance and ASHRAE 90.1 standards.

Trane's design incorporates system advantages such as:

- Extensive return-air and supply-air configuration availability
- Dual sloped polymer drain pan or optional stainless steel drain pan
- Multi-speed motor
- Insulated compressor enclosure for quiet unit design
- Integrated factory mounted, wired and tested controls
- High and low pressure safeties as standard
- Orifice ring motor mounting device as standard for ease of motor service
- Factory mounted and wired 24V condensate overflow switch
- TXV
- Factory mounted and wired freezestat on every unit
- Waterside economizing option (horizontal)
- Full array of filter options including MERV 8 and MERV 13 to meet LEED EQ Credit 5
- Foil faced insulation option for cleanability
- Selectable on/off switch



Trane® Axiom™ High Efficiency Water Source Heat Pumps

AHRI - ISO Ratings

Horizontal, Model GEH

			Water Loop (WLHP)				Ground Loop (GLHP)			
			Cooling 86F		Heating 68F		Cooling 77F		Heating 32F	
Size	Waterflow	Airflow	Cooling capacity (BTUH)	EER	Heating capacity (BTUH)	COP	Cooling capacity (BTUH)	EER	Heating capacity (BTUH)	COP
006	1.8	215	7,500	12.00	9,300	4.30	7,900	14.10	6,000	3.20
009	2.1	285	8,800	12.38	11,300	4.56	9,300	14.10	7,200	3.20
012	2.8	380	11,700	13.20	14,600	4.69	12,000	14.52	9,300	3.26
015	3.5	475	14,300	12.85	18,300	4.30	14,800	14.66	12,100	3.20
018	4.2	570	18,000	13.00	21,900	4.47	18,500	14.18	14,300	3.20
024	5.6	760	24,000	13.60	29,700	4.55	25,100	15.87	19,300	3.29
030	7.0	900	28,200	13.04	35,700	4.46	29,500	14.83	22,800	3.29
035	8.4	1140	33,800	13.70	41,200	4.70	35,300	15.80	25,900	3.20
042	9.8	1330	41,500	13.00	51,900	4.46	43,100	14.55	34,100	3.29
048	11.2	1520	49,700	13.13	58,200	4.65	51,800	15.02	38,700	3.49
060	14.0	1900	59,700	13.00	70,500	4.36	62,200	14.55	46,400	3.29

Note: Rated in accordance with ANSI/AHRI/ASHRAE/ISO13256-1. Certified conditions are 80.6F DB/66.2F WB EAT in cooling and 68F DB/59F WB EAT in heating.

Vertical, Model GEV

			Water Loop (WLHP)				Ground Loop (GLHP)			
			Cooling 86F		Heating 68F		Cooling 77F		Heating 32F	
Size	Waterflow	Airflow	Cooling capacity (BTUH)	EER	Heating capacity (BTUH)	COP	Cooling capacity (BTUH)	EER	Heating capacity (BTUH)	COP
006	1.8	215	7,600	12.20	9,500	4.47	7,800	14.10	6,200	3.20
009	2.1	285	8,800	12.38	11,300	4.75	9,100	14.10	7,200	3.26
012	2.8	380	11,600	13.20	14,900	4.79	12,000	14.90	9,400	3.35
015	3.5	475	14,400	13.14	18,300	4.56	14,800	14.85	11,700	3.26
018	4.2	570	17,800	13.00	22,200	4.47	18,300	14.10	14,500	3.26
024	5.6	760	24,700	13.89	29,500	4.65	25,500	16.06	19,500	3.39
030	7.0	900	28,800	13.60	34,900	4.75	29,900	15.59	23,200	3.49
036	8.4	1140	36,300	14.28	46,200	4.57	37,600	16.37	30,100	3.20
042	9.8	1330	41,000	13.13	51,700	4.55	43,100	15.12	33,800	3.39
048	11.2	1520	49,500	13.32	51,400	4.46	51,300	15.30	34,200	3.29
060	14.0	1900	61,600	13.23	71,700	4.65	64,100	15.02	46,800	3.39

Note: Rated in accordance with ANSI/AHRI/ASHRAE/ISO13256-1. Certified conditions are 80.6F DB/66.2F WB EAT in cooling and 68F DB/59F WB EAT in heating.

Unit Size

Horizontal	006	009	012	015	018	024	030	035	042	048	060
Width (inch)	20.0	20.0	20.0	20.0	23.0	23.0	23.0	25.0	25.0	33.0	33.0
Length (inch)	40.0	40.0	40.0	40.0	46.0	46.0	46.0	50.0	50.0	58.0	58.0
Height (inch)	15.0	15.0	15.0	15.0	18.0	18.0	18.0	19.0	19.0	21.0	21.0

Vertical	006	009	012	015	018	024	030	036	042	048	060
Width (inch)	19.5	19.5	19.5	19.5	21.5	21.5	21.5	24.5	24.5	26.5	26.5
Length (inch)	21.5	21.5	21.5	21.5	21.5	21.5	21.5	26.5	26.5	30.5	30.5
Height (inch)	31.3	31.3	31.3	31.3	39.3	39.3	39.3	41.9	41.9	46.9	46.9

General Data

Horizontal	006	009	012	015	018	024	030	036	042	048	060
Compressor Type	Rotary	Rotary	Rotary	Rotary	Rotary	Scroll	Scroll	Scroll	Scroll	Scroll	Scroll
Approximate Weight (lb)	165	165	173	173	248	253	253	313	288	398	398
Filter #1 Size	15x20	15x20	15x20	15x20	18x24	18x24	18x24	19x26	19x26	21x30	21x30
Water In/Out Size (FPT) (in)	1/2	1/2	1/2	1/2	3/4	3/4	3/4	3/4	3/4	1	1
Condensate Size (NPTI) (in)	3/4	3/4	3/4	3/4	3/4	3/4	3/4	3/4	3/4	3/4	3/4
Blower Wheel Size (in)	9x4	9x4	9x4	9x4	9x6	10x6	10x6	11x8	11x8	10x10	12x11

Vertical	006	009	012	015	018	024	030	036	042	048	060
Compressor Type	Rotary	Rotary	Rotary	Rotary	Rotary	Scroll	Scroll	Scroll	Scroll	Scroll	Scroll
Approximate Weight (lb)	165	165	173	173	248	253	253	288	288	348	350
Filter #1 Size	16x20	16x20	16x20	16x20	20x20	20x20	20x20	20x25	20x25	24x30	24x30
Water In/Out Size (FPT) (in)	1/2	1/2	1/2	1/2	3/4	3/4	3/4	3/4	3/4	1	1
Condensate Size (NPTI) (in)	3/4	3/4	3/4	3/4	3/4	3/4	3/4	3/4	3/4	3/4	3/4
Blower Wheel Size (in)	9x4	9x4	9x4	9x4	9x6	10x6	10x6	11x8	11x8	10x10	12x11



Trane – by Trane Technologies (NYSE: TT), a global climate innovator – creates comfortable, energy efficient indoor environments through a broad portfolio of heating, ventilating and air conditioning systems and controls, services, parts and supply. For more information, please visit trane.com or tranetechnologies.com.

All trademarks referenced in this document are the trademarks of their respective owners.

© 2020 Trane. All Rights Reserved.

WSHP-SLB044-EN
05/07/2020